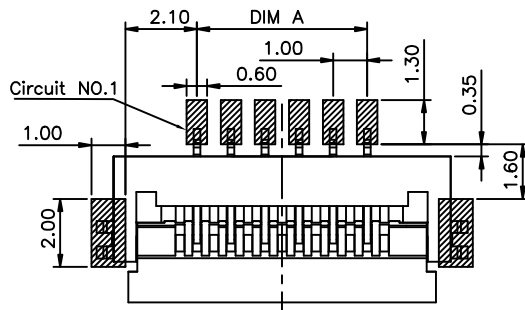


FPC THICKNESS=0.30±0.03
GENERAL TOLERANCE ±0.05



RECOMMEND PCB LAYOUT
GENERAL TOLERANCE ±0.05

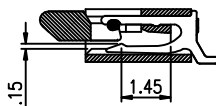
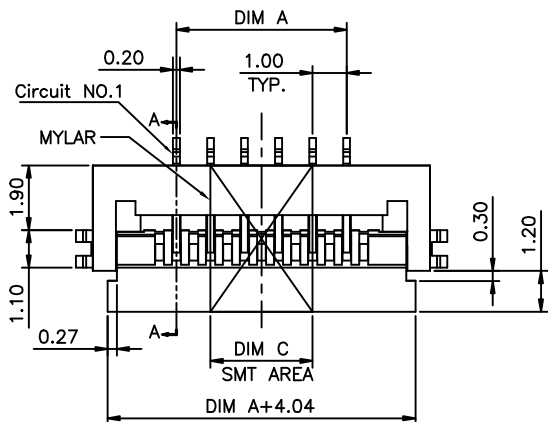
NOTES:

- MATERIAL:
 - HOUSING: THERMOPLASTIC, HIGH TEMP., UL94V-0;
 - CONTACT: COPPER ALLOY
 - FITTING NAIL: COPPER ALLOY
 - ACTUATOR: THERMOPLASTIC, HIGH TEMP., UL94V-0;
- FINISH:
 - CONTACT:
 - 50~100u" NICKEL UNDER PLATING
 - GOLD FLASH PLATING
 - N: 100~200u" MATTE TIN PLATING
 - B: 5u" GOLD ON CONTACT AREA AND 1u" MIN GOLD ON SOLDER AREA
 - FITTING NAIL:
 - 50~100u" NICKEL UNDER PLATING
 - GOLD FLASH PLATING
 - N: 50~100u" NICKEL UNDER PLATING
 - 100~200u" MATTE TIN PLATING
- REFLOW SOLDER CAPABLE TO 260°C PER ACES SPEC.
- SPEC. PLS. REFER TO PS-50507-XXXX-XXX
- COPLANARITY 0.1 MM MAX
- PART NUMBER

50505-XXX X X-XXX

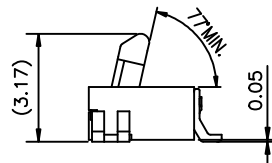
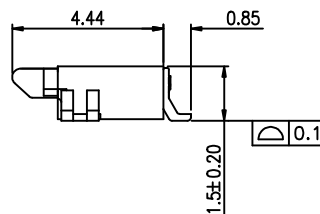
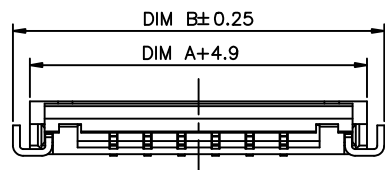
XXX	HOUSING COLOR	ACTUATOR COLOR	PACKAGE	HALOGEN FREE	DIM C (M/S)
001	BLACK	NATURAL	88195-XXXX-TRP (PITCH=8)	HF	<15pin:3.0 ≥15pin:6.0
W01	BLACK	NATURAL	88195-XXXX-WT-TRP (PITCH=8)	HF	
002	BLACK	NATURAL	50505-XXXX-XX-TRP (PITCH=12)	HF	
S01	BLACK	NATURAL	88195-XXXX-U-TRP (PITCH=8)	HF	
S02	NATURAL	NATURAL	88195-XXXX-U-TRP (PITCH=8)	HF	
003	BLACK	NATURAL	88195-XXXX-TRP (PITCH=8)	HF	12pin:10.00
004	BLACK	NATURAL	88195-XXXX-TRP (PITCH=8)	HF	12pin:10.00
005	BLACK	NATURAL	88195-XXXX-U-TRP (PITCH=8, PLASTIC REEL)	HF	4pin:3.0 12pin:10.00

PLATING
1:GOLD FLASH
N:MATTE TIN (LEAD FREE)
B:5u" GOLD ON CONTACT AREA

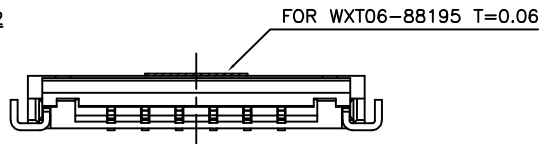
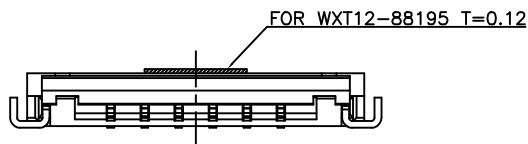


SECTION A-A

PACKING
0: TAPE & REEL
1: TUBE
4: TAPE & REEL WITH MYLAR
5: TUBE WITH MYLAR



ACTUATOR OPEN STATUS



CKT	Dim A	Dim B
004	3.00	8.90
006	5.00	10.90
007	6.00	11.90
008	7.00	12.90
009	8.00	13.90
010	9.00	14.90
012	11.00	16.90
013	12.00	17.90
014	13.00	18.90
016	15.00	20.90
018	17.00	22.90
020	19.00	24.90
022	21.00	26.90
024	23.00	28.90
025	24.00	29.90
026	25.00	30.90
028	27.00	32.90

QUALITY SYMBOLS MAJOR Ⓢ CRITICAL Ⓢ	DRAWN BY Mengmeng	DATE 23/11/22
GENERAL TOLERANCES (UNLESS SPECIFIED)	CHECKED BY Xu, Zhi Yong	DATE 23/11/22
X. ±0.5 .X ±0.25 .XX ±0.15 .XXX ±0.1 ANGLES ±2°	APPROVED BY Xu, Zhi Yong	DATE 23/11/22
	UNITS mm	SCALE 1:1
	SCALE 1:1	SHEET NO. 1 OF 1

		TITLE 1.0 mm ZIF Easy-on FPC S/T R/A H=1.5 mm	
		RFQ NO.	PART NO. SEE NOTES
DWG NO. 50505-XXXX-XXX		REV T	